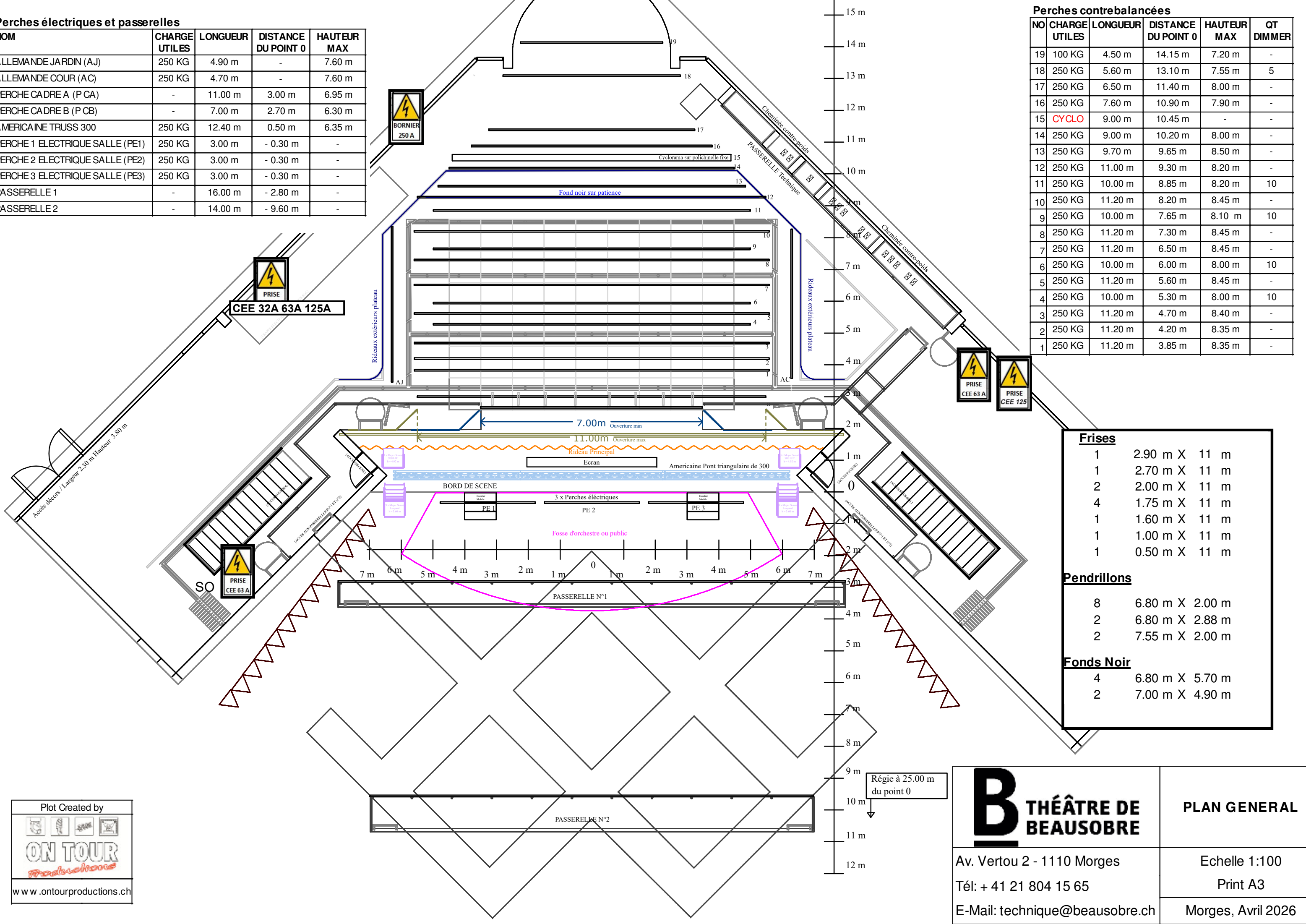


Perches électriques et passerelles

NOM	CHARGE UTILES	LONGUEUR	DISTANCE DU POINT 0	HAUTEUR MAX
ALLEMANDE JARDIN (AJ)	250 KG	4.90 m	-	7.60 m
ALLEMANDE COUR (AC)	250 KG	4.70 m	-	7.60 m
PERCHE CADRE A (P CA)	-	11.00 m	3.00 m	6.95 m
PERCHE CADRE B (P CB)	-	7.00 m	2.70 m	6.30 m
AMERICAINE TRUSS 300	250 KG	12.40 m	0.50 m	6.35 m
PERCHE 1 ELECTRIQUE SALLE (PE1)	250 KG	3.00 m	- 0.30 m	-
PERCHE 2 ELECTRIQUE SALLE (PE2)	250 KG	3.00 m	- 0.30 m	-
PERCHE 3 ELECTRIQUE SALLE (PE3)	250 KG	3.00 m	- 0.30 m	-
PASSERELLE 1	-	16.00 m	- 2.80 m	-
PASSERELLE 2	-	14.00 m	- 9.60 m	-

Perches contrebalancées

NO	CHARGE UTILES	LONGUEUR	DISTANCE DU POINT 0	HAUTEUR MAX	QT DIMMER
19	100 KG	4.50 m	14.15 m	7.20 m	-
18	250 KG	5.60 m	13.10 m	7.55 m	5
17	250 KG	6.50 m	11.40 m	8.00 m	-
16	250 KG	7.60 m	10.90 m	7.90 m	-
15	CYCLO	9.00 m	10.45 m	-	-
14	250 KG	9.00 m	10.20 m	8.00 m	-
13	250 KG	9.70 m	9.65 m	8.50 m	-
12	250 KG	11.00 m	9.30 m	8.20 m	-
11	250 KG	10.00 m	8.85 m	8.20 m	10
10	250 KG	11.20 m	8.20 m	8.45 m	-
9	250 KG	10.00 m	7.65 m	8.10 m	10
8	250 KG	11.20 m	7.30 m	8.45 m	-
7	250 KG	11.20 m	6.50 m	8.45 m	-
6	250 KG	10.00 m	6.00 m	8.00 m	10
5	250 KG	11.20 m	5.60 m	8.45 m	-
4	250 KG	10.00 m	5.30 m	8.00 m	10
3	250 KG	11.20 m	4.70 m	8.40 m	-
2	250 KG	11.20 m	4.20 m	8.35 m	-
1	250 KG	11.20 m	3.85 m	8.35 m	-



Frises		
1	2.90 m X	11 m
1	2.70 m X	11 m
2	2.00 m X	11 m
4	1.75 m X	11 m
1	1.60 m X	11 m
1	1.00 m X	11 m
1	0.50 m X	11 m

Pendrillons		
8	6.80 m X	2.00 m
2	6.80 m X	2.88 m
2	7.55 m X	2.00 m

Fonds Noir		
4	6.80 m X	5.70 m
2	7.00 m X	4.90 m

Plot Created by

www.ontourproductions.ch

**THÉÂTRE DE
BEAUSOBRE**

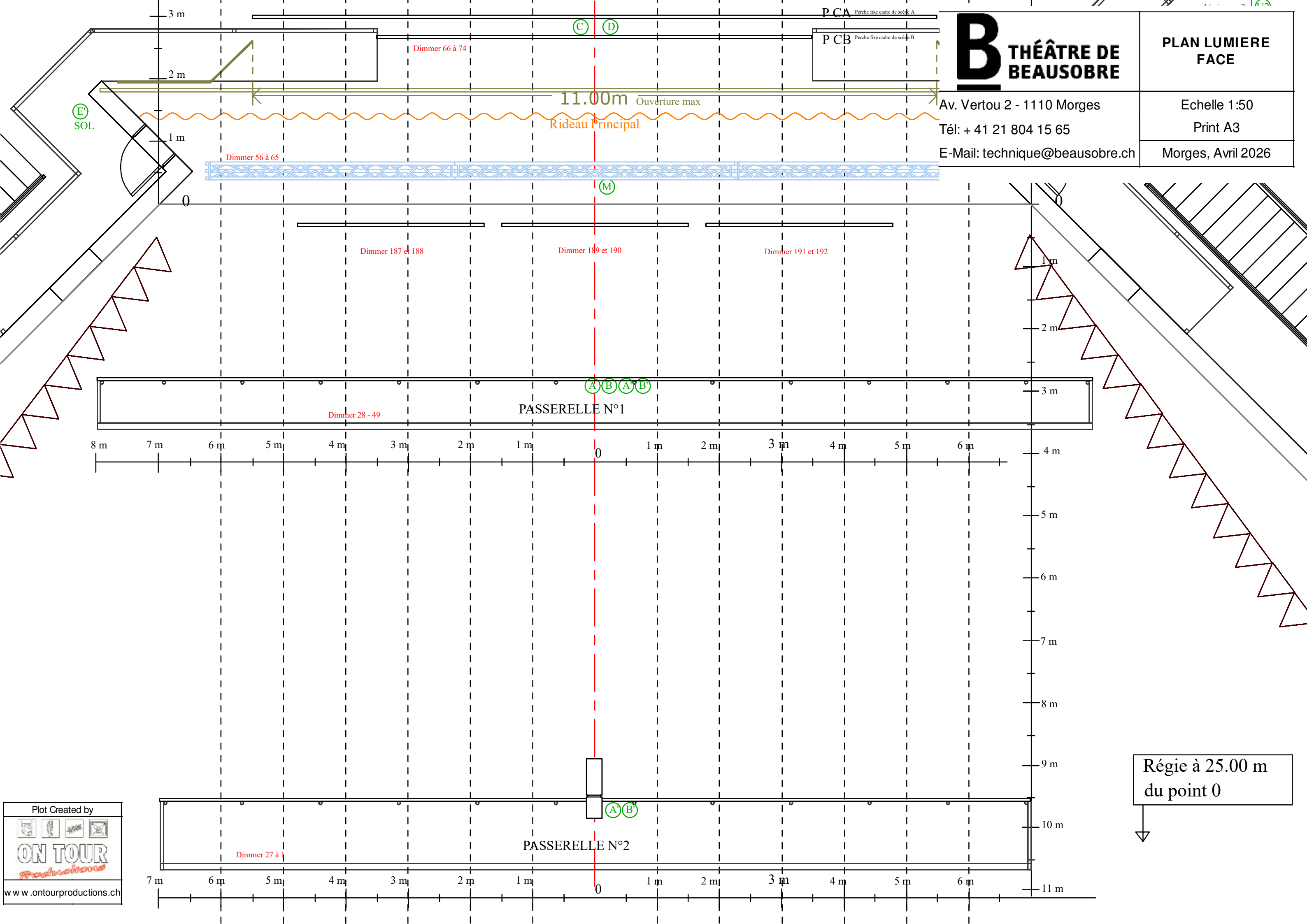
Av. Vertou 2 - 1110 Morges
Tél: + 41 21 804 15 65
E-Mail: technique@beausobre.ch

PLAN GENERAL

Echelle 1:100
Print A3
Morges, Avril 2026

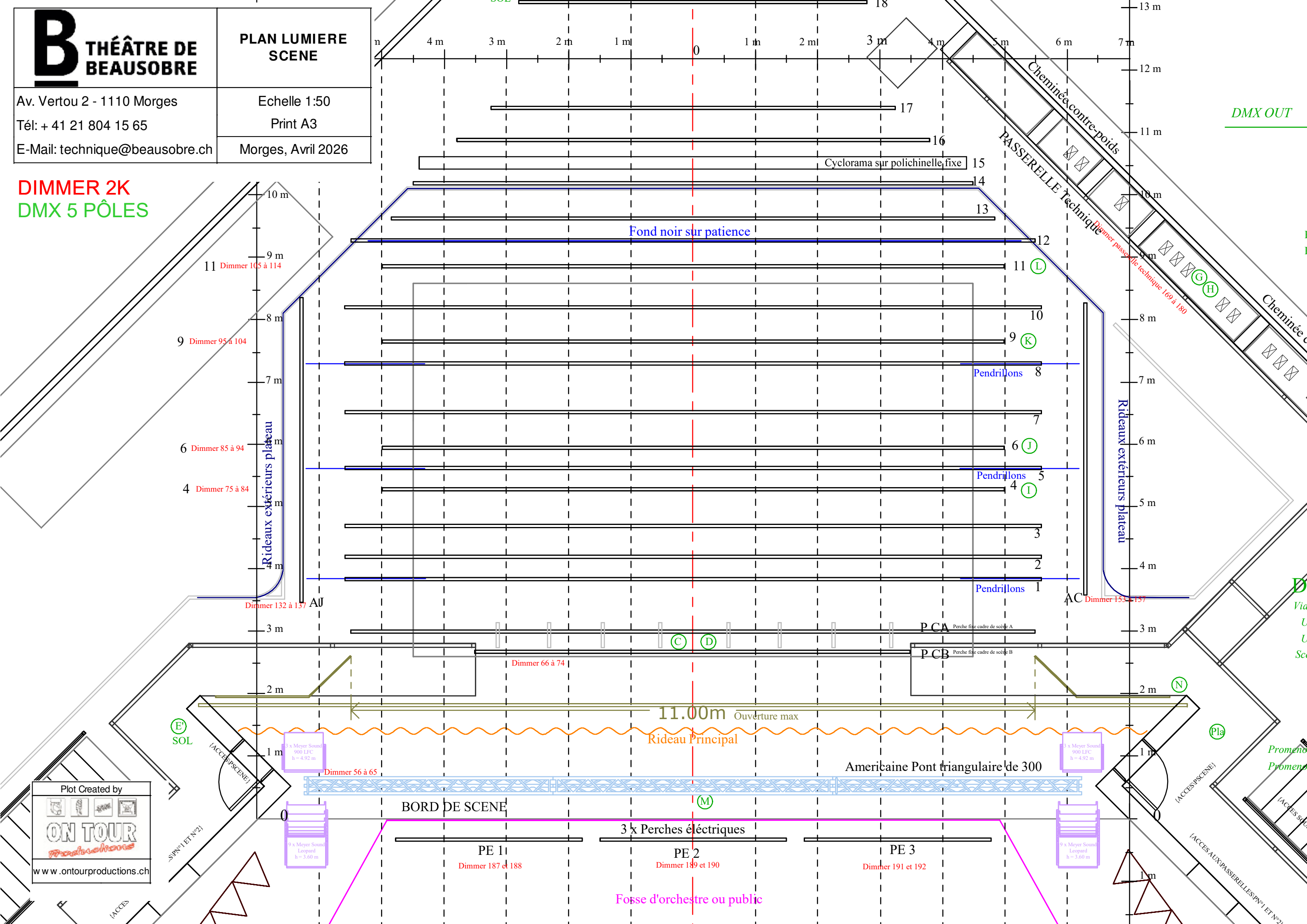
Av. Vertou 2 - 1110 Morges
 Tél: + 41 21 804 15 65
 E-Mail: technique@beausobre.ch

Echelle 1:50
 Print A3
 Morges, Avril 2026



Régie à 25.00 m
 du point 0

DIMMER 2K
DMX 5 PÔLES



DMX OUT

11 Dimmer 105 à 114

9 Dimmer 95 à 104

6 Dimmer 85 à 94

4 Dimmer 75 à 84

Dimmer 132 à 137

Dimmer 66 à 74

Dimmer 56 à 65

Dimmer 187 et 188

Dimmer 189 et 190

Dimmer 191 et 192

Dimmer 153 à 157

Plot Created by
ON TOUR
www.ontourproductions.ch

SPV N°1 ET N°2

ACCES

ACCES SCENE

ACCES SCENE

ACCES SCENE

ACCES SCENE

ACCES SCENE

ACCES SCENE

ACCES SCENE

ACCES SCENE

ACCES SCENE

ACCES SCENE

ACCES SCENE

ACCES SCENE

ACCES SCENE

ACCES SCENE

ACCES SCENE

ACCES SCENE

ACCES SCENE

ACCES SCENE

ACCES SCENE

ACCES SCENE

ACCES SCENE

ACCES SCENE

ACCES SCENE

ACCES SCENE

ACCES SCENE

ACCES SCENE

ACCES SCENE

ACCES SCENE

ACCES SCENE

ACCES SCENE

ACCES SCENE

ACCES SCENE

ACCES SCENE

ACCES SCENE

ACCES SCENE

ACCES SCENE

ACCES SCENE

ACCES SCENE

ACCES SCENE

ACCES SCENE

ACCES SCENE

ACCES SCENE

ACCES SCENE

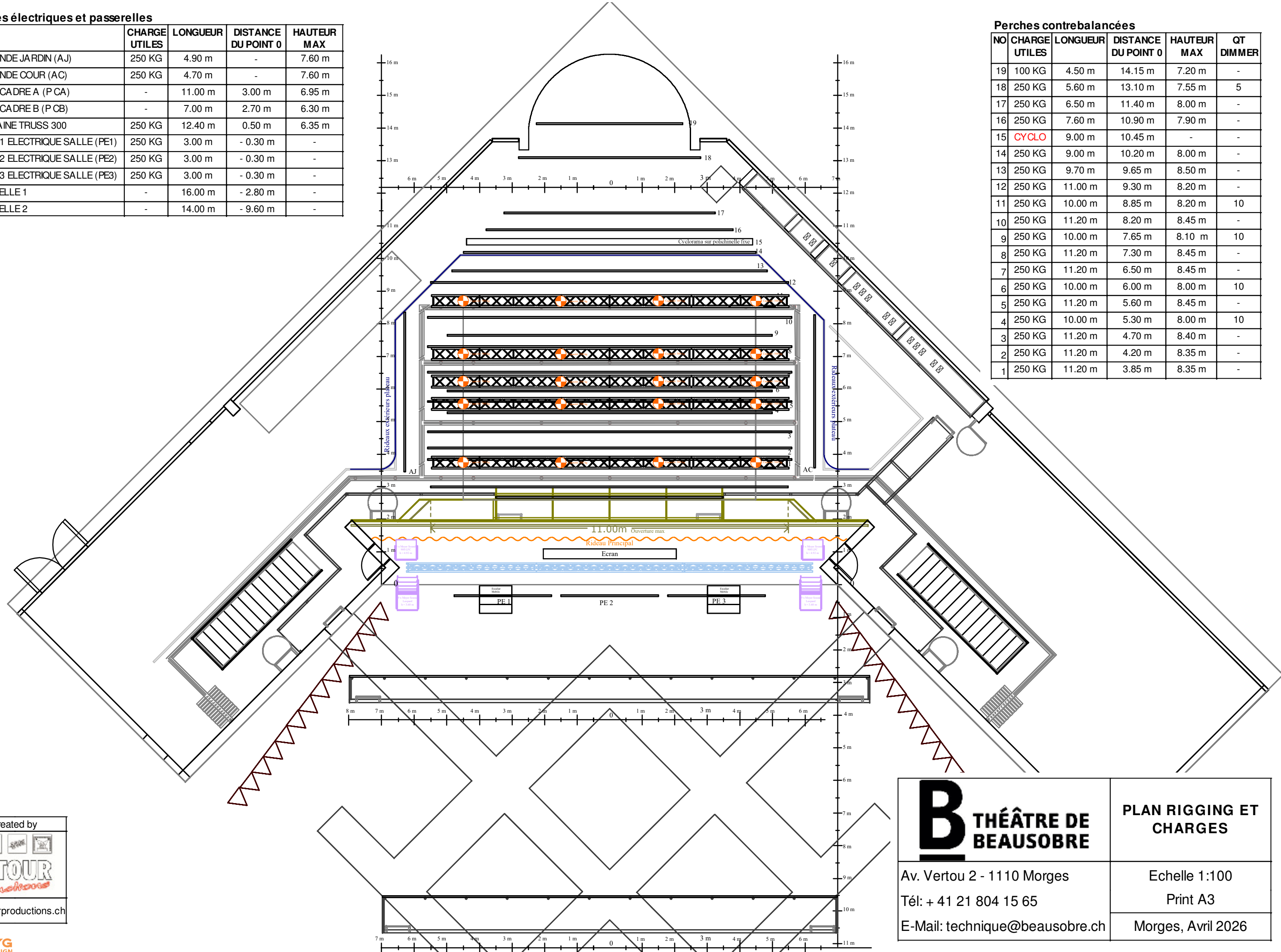
ACCES SCENE

Perches électriques et passerelles

NOM	CHARGE UTILES	LONGUEUR	DISTANCE DU POINT 0	HAUTEUR MAX
ALLEMANDE JARDIN (AJ)	250 KG	4.90 m	-	7.60 m
ALLEMANDE COUR (AC)	250 KG	4.70 m	-	7.60 m
PERCHE CADRE A (P CA)	-	11.00 m	3.00 m	6.95 m
PERCHE CADRE B (P CB)	-	7.00 m	2.70 m	6.30 m
A MERICAIN TRUSS 300	250 KG	12.40 m	0.50 m	6.35 m
PERCHE 1 ELECTRIQUE SALLE (PE1)	250 KG	3.00 m	- 0.30 m	-
PERCHE 2 ELECTRIQUE SALLE (PE2)	250 KG	3.00 m	- 0.30 m	-
PERCHE 3 ELECTRIQUE SALLE (PE3)	250 KG	3.00 m	- 0.30 m	-
PASSERELLE 1	-	16.00 m	- 2.80 m	-
PASSERELLE 2	-	14.00 m	- 9.60 m	-

Perches contrebalancées

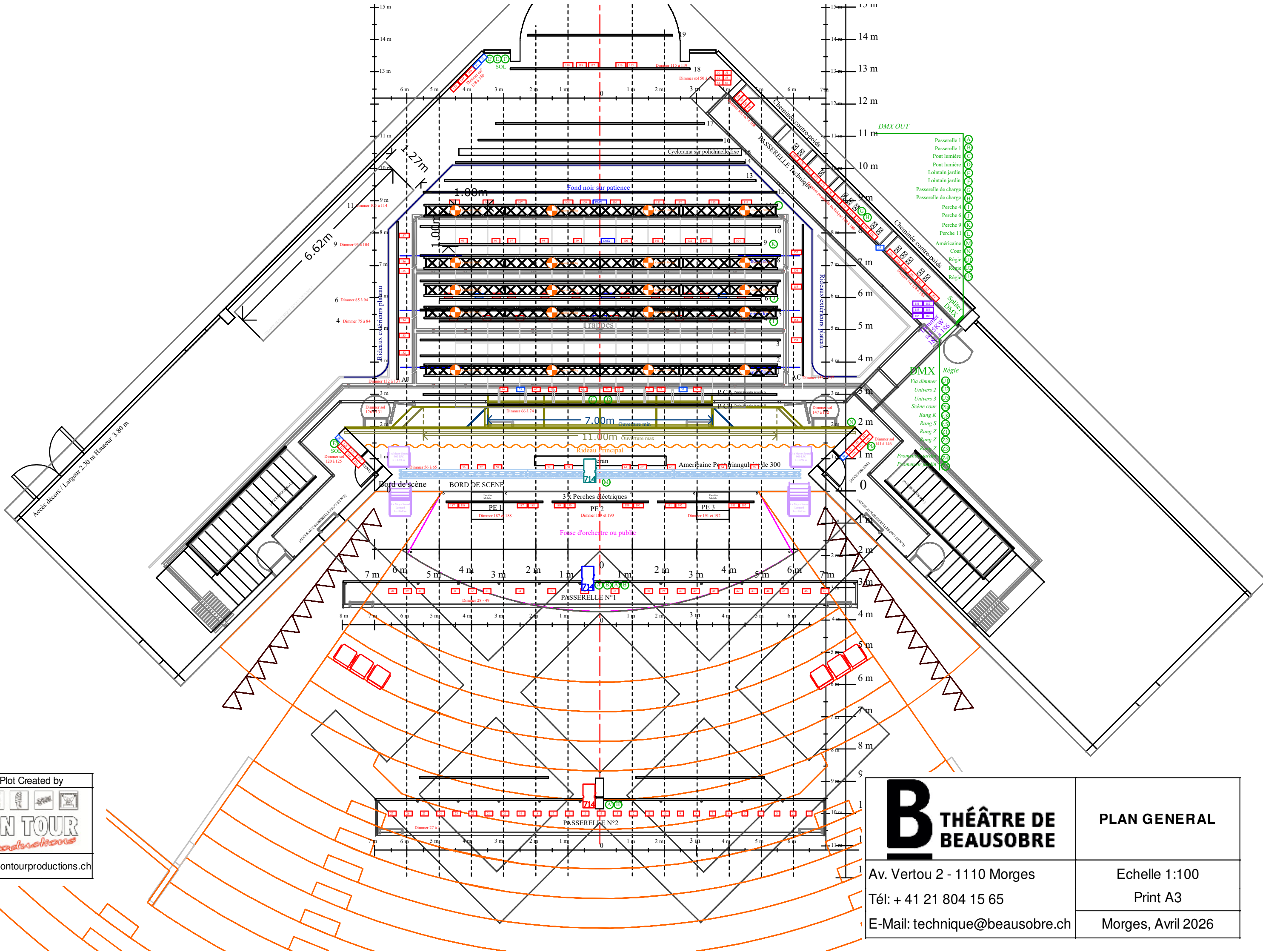
NO	CHARGE UTILES	LONGUEUR	DISTANCE DU POINT 0	HAUTEUR MAX	QT DIMMER
19	100 KG	4.50 m	14.15 m	7.20 m	-
18	250 KG	5.60 m	13.10 m	7.55 m	5
17	250 KG	6.50 m	11.40 m	8.00 m	-
16	250 KG	7.60 m	10.90 m	7.90 m	-
15	CYCLO	9.00 m	10.45 m	-	-
14	250 KG	9.00 m	10.20 m	8.00 m	-
13	250 KG	9.70 m	9.65 m	8.50 m	-
12	250 KG	11.00 m	9.30 m	8.20 m	-
11	250 KG	10.00 m	8.85 m	8.20 m	10
10	250 KG	11.20 m	8.20 m	8.45 m	-
9	250 KG	10.00 m	7.65 m	8.10 m	10
8	250 KG	11.20 m	7.30 m	8.45 m	-
7	250 KG	11.20 m	6.50 m	8.45 m	-
6	250 KG	10.00 m	6.00 m	8.00 m	10
5	250 KG	11.20 m	5.60 m	8.45 m	-
4	250 KG	10.00 m	5.30 m	8.00 m	10
3	250 KG	11.20 m	4.70 m	8.40 m	-
2	250 KG	11.20 m	4.20 m	8.35 m	-
1	250 KG	11.20 m	3.85 m	8.35 m	-





Plot Created by

 www.ontourproductions.ch

 Av. Vertou 2 - 1110 Morges Tél: + 41 21 804 15 65 E-Mail: technique@beausobre.ch	PLAN RIGGING ET CHARGES
	Echelle 1:100 Print A3
	Morges, Avril 2026



Plot Created by

 www.ontourproductions.ch

	PLAN GENERAL
	Echelle 1:100 Print A3
	Morges, Avril 2026

Av. Vertou 2 - 1110 Morges
 Tél: + 41 21 804 15 65
 E-Mail: technique@beausobre.ch